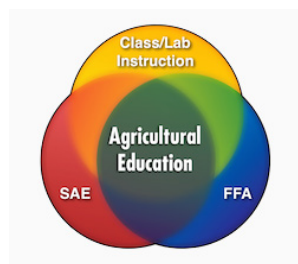




Nebraska Agricultural Education & FFA Handbook



What is agricultural education?



Agricultural education is a school-based program that prepares you for careers in agriculture, food and natural resources.

The three components of agricultural education tell our story.



INSTRUCTION

The lead circle and base foundation in the agricultural education system is formal classroom and laboratory instruction in 23 available courses.

Agriculture teachers work hard to make these classes experience-based and relevant to careers in the agriculture industry.



SUPERVISED AGRICULTURAL EXPERIENCE

Agricultural education students are guided in developing a Supervised Agricultural Experience (SAE) to develop skills and gain knowledge of the agriculture industry.

Student SAEs include research projects, job shadowing experiences, jobs held or businesses started by students. All SAEs relate directly to agriculture.



FFA

FFA is the organization for students enrolled in agricultural education and seeks to benefit students by developing their potential for premier leadership, personal growth and career success through agricultural education.

FFA allows students to compete, participate and receive recognition in agricultural career skills development and leadership programs.



What happens in the classroom?

Agricultural education is taught by a certified agriculture teacher who holds a degree in agriculture from a college or university. They are dedicated to professional development and staying up-to-date on the rapidly changing global agriculture industry.

You will learn about the Agriculture, Food and Natural Resources career pathways in your introductory course. You'll then continue on to intermediate and capstone level courses, building upon what you learned the previous year. The pathways provide a guide for you to follow what interests you most! Your agriculture teacher will also integrate FFA and Supervised Agricultural Experience concepts and principles into your classes.

COURSE OPTIONS AND PROGRAMS OF STUDY

Introduction to Agriculture, Food & Natural Resources

(introductory course taken by all agricultural education students)

• intermediate course + capstone course

ANIMAL SYSTEMS PATHWAY

- Animal Science
- + Large Animal Management
- + Small Animal Management
- + Veterinary Science
- + Biotechnology

ENVIRONMENTAL & NATURAL RESOURCES SYSTEMS PATHWAY

- Environmental & Natural Resources
- + Environmental & Natural Resources Management
- + Wildlife Management

PLANT SYSTEMS PATHWAY

- Plant Science
- + Crop Management/ Agronomy
- + Nursery & Landscape
- + Floriculture
- + Biotechnology

POWER, STRUCTURE & TECHNICAL SYSTEMS PATHWAY

- Power, Structure & Technical Systems Fundamentals
- Welding
- + Power, Structural & Technology Systems
- + Precision Agriculture and Engineering
- + Metals & Fabrication

FOOD PRODUCTS & PROCESSING SYSTEMS PATHWAY

- Food Science & Safety
- + Food Products and Technology

AGRIBUSINESS SYSTEMS PATHWAY

- Agribusiness
- + Agricultural Economics
- + Agricultural Management & Entrepreneurship
- + Agricultural Sales & Communications

DIVERSIFIED AGRICULTURE SYSTEMS PATHWAY

- Animal Science
- Plant Science
- Agribusiness
- Food Science and Safety
- Food Production, Nutrition and Health
- Environmental and Natural Resources
- Welding
- Power, Structural & Technical Foundations

Where can your program of study lead you?

AGRIBUSINESS SYSTEMS

Workers use technology to coordinate all activities that contribute to production, processing, marketing, distribution, financing and development of agricultural commodities.

Career Ideas

Agricultural Loan Officer • Agribusiness Manager • International Ag Marketing Specialist • Marketing Communications Manager • Financial Manager



ANIMAL SYSTEMS

Workers study genetics, nutrition, reproduction, growth and development of food and companion animals. They inspect and grade livestock food products, purchase livestock or work in sales or marketing.

Career Ideas

Geneticist • Nutritionist • Physiologist • Biomaterials Engineering • Farm and Ranch Managers



DIVERSIFIED AGRICULTURE SYSTEMS

Workers in diversified agriculture can study all programs of study to develop skills to work with plants, animals, food, environment, natural resources and power, structural and technical areas.

Career Ideas

Farmer • Rancher • Sales Representative • Farm and Ranch Managers • Entrepreneur • Machinery Operator



ENVIRONMENTAL AND NATURAL RESOURCES SYSTEMS



Workers are involved in pollution control, recycling, waste disposal and public health. They conduct hazardous waste management studies and analyze environmental research projects.

Career Ideas

Environmental Engineer • Hazardous Materials Handler • Health and Safety Sanitarian • Toxicologist • Conservation Officer • Water Quality Manager • Forestry Scientist • Fisheries Scientist • Wildlife Manager

FOOD PRODUCTS AND PROCESSING SYSTEMS



Workers discover food sources and develop ways to process, preserve, package or store food. They create new food products and inspect food processing to ensure food safety.

Career Ideas

Biochemist • Food Broker or Engineer • Food Science Technician • Quality Assurance Specialist

POWER, STRUCTURAL AND TECHNICAL SYSTEMS



Workers apply knowledge of engineering, power hydraulics, pneumatics, electronics, structures and controls to agriculture, and develop ways to improve the processing of agricultural products.

Career Ideas

Agricultural Engineer • Diesel Mechanic • Welder • Farm Equipment Mechanic • Global Positioning Technician

PLANT SYSTEMS



Workers develop ways to improve the nutritional and aesthetic value of plants and quality of seeds.

Career Ideas

Agronomist • Entomologist • Plant Scientist • Golf Course Superintendent • Landscape Architect

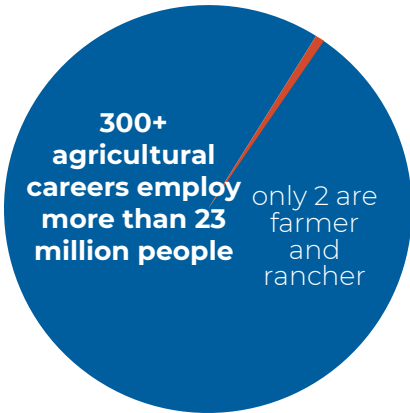
Why are careers in agriculture so important?

Our population is growing like never before. There are 7 billion mouths to feed and our population is expected to grow to 9 billion people by 2050. Jobs and careers in all sectors of agriculture will be vital to keeping up with the global demand for agricultural and food production.

To feed everyone, we'll need to produce as much food in the next 50 years as we have produced the last 10,000 years.



In the U.S., one part of this challenge is finding enough workers to fill more than 20 million agricultural jobs.



AMERICAN AGRICULTURE IS COMPOSED OF MORE THAN 300 CAREERS RELATED TO THE PRODUCTION OF FOOD. OF THESE, ONLY TWO ARE “FARMER AND RANCHER”.

OUT OF 57,900 AVERAGE JOB OPENINGS PER YEAR FOR AGRICULTURALLY-BASED 4-YEAR COLLEGE GRADUATES, ONLY 35,400 GRADUATES ARE EXPECTED, RESULTING IN A 39% GAP IN THE LABOR SUPPLY.

What do former FFA members have to say?

KATIE GRIESS



Katie Griess is the Advertising and Media Specialist at CPI. Her role is fairly diverse ranging from company photographer, social media manager, donations, sponsorships and advertising opportunities. She also helps to produce company newsletters, press releases, website updates and marketing campaigns. Katie was a member of the Sutton FFA chapter with her favorite FFA leadership experience being WLC because she was able to connect with FFA members from across the United States, sight-see in Washington D.C. and meet with Congressmen. Katie said her advice for Nebraska FFA members is, "Step out of your comfort zone and try a contest or event you wouldn't normally try. You might find you really enjoy it and it could help you decide on your future career."

ERIC DAM



Eric Dam is a former Logan View FFA member and now is an Area Lead with Corteva Agriscience. He said, "The impact FFA has on my career path was certainly significant, in that the leadership and personal growth opportunities offered through FFA re-enforced my passion for the agriculture industry and gave me the confidence to step outside my comfort zone to pursue a career." Now as an area lead, he serves farmers and ag retail partners by leading the commercial sales and agronomy teams for Pioneer seeds and Corteva Crop Protection. Eric's advice is to gain experiences and find your passion because life offers so many opportunities.

"I was fortunate to attend both State and National FFA convention several times, and I can say that those memories still stick with me today. The sea of blue jackets, the energy and professionalism exhibited by all the members, advisors, and motivational speakers, and the excitement and anticipation around competing in events- those experiences will always be remembered and are re-energized regularly when I attend State Convention yet today," said Eric Dam.

What is a Supervised Agricultural Experience?



A Supervised Agricultural Experience (SAE) is an experience-based program in which you gain work-based learning experiences and develop skills in agriculture career areas that interests you.

There are two key steps to getting started:

STEP 1: Visit with your agriculture teacher about your career interests.

STEP 2: Create a program that develops skills in your areas of interest.

SAEs are categorized as either a Foundational SAE or an Immersion SAE.

Foundational SAEs include instruction for all students each year related to:

Career exploration and planning
Personal financial planning and management
Workplace Safety

Employability skills for college and career readiness
Agricultural literacy

Immersion SAEs are identified in one of the following five types:

Entrepreneurship/Ownership: In this SAE, students create, own and operate a business which provides good and/or services to the marketplace. Their business can range from starting a mowing service to developing mobile apps. They make the operational and risk management decisions on how goods and/or services are provided.

Placement/Internships: In a placement SAE, students work in an agriculture-related business, but do not own the business. An internship SAE provides a more targeted experience that focuses on meeting specific training needs based on an educational training plan.

Research (Experimental, Analytical, Invention): Students follow the scientific process and accepted best practices for conducting research. They complete a research plan and conduct peer reviews, providing

a summary presentation on their research. Research can be experimental in nature, analyzing why or how something occurs, or applying engineering design process to create a new product or service.

School Based Enterprises: This is an entrepreneurship SAE that involves a group of students working cooperatively to create a business. The business is student-led and provides goods or services operated from the school campus utilizing facilities, equipment and other resources provided by the agricultural education program.

Service Learning: Service learning is where a student or a team of students work toward meeting a need in the school or community. They design and carry out a project to provide a benefit to an organization, group or individuals within the community.



FFA – What’s it all about?

THE MISSION:

The National FFA Organization is dedicated to making a positive difference in the lives of students by developing their potential for premier leadership, personal growth and career success through agricultural education.

THE MOTTO:

Learning to Do, Doing to Learn, Earning to Live, Living to Serve.

THE COLORS:

In 1929, at the second National FFA Convention, the delegates adopted National Blue and Corn Gold as the official colors of the FFA. This became the colors of one of the most recognizable symbols of FFA, the blue corduroy jacket.



THE EMBLEM:

The FFA Emblem was designed and adopted in 1933 as part of the official jacket. The emblem itself carries much meaning to those involved in agricultural education.



FFA was started in 1928 when 33 ag students gathered in Kansas City to solidify support for agricultural education. Nebraska was the sixth state to charter in 1928.

FFA has grown to over 850,000 members in 8,995 chapters in all 50 states, Puerto Rico, U.S. Virgin Islands and the District of Columbia.

Statewide FFA Leadership Opportunities



FFA offers exciting opportunities to gain leadership and career skills while making new friends from around the state. Leadership conferences combined with competitive events take place throughout the year.

PATHWAYS TO CAREERS CONFERENCE

Each fall, Nebraska FFA members are invited to attend a high-energy conference with industry representatives. Students get the opportunity to engage with industry professionals from the seven agriculture, food and natural resource career pathways. Industry professionals lead hands-on, interactive workshops and develop relationships with future employees.

CHAPTER OFFICER LEADERSHIP TRAINING (COLT)

COLT is for FFA chapter officers to learn how to effectively serve their chapters. Conferences are held throughout May. The focus is on individual leadership skills as well as how to work as a chapter officer team. Officers engage in experience-based leadership activities, share and learn great ideas and create an action plan for their year of service.

FALL LEADERSHIP CONFERENCES

Each fall, leadership conferences such as EDGE are held in various regions of the state to provide students at all levels the chance to improve their leadership skills. Participants get to know other students and begin understanding what is possible in agricultural education and FFA.

MISSION/IMPACT

This conference prepares leaders to be advocates of the chapter for current and potential members, as well as community stakeholders. The two-day conference is held in Kearney in mid-February.

STATE CONVENTION

Nebraska FFA State Convention is an event for Nebraska's FFA members, advisors, agriculture teachers, parents, sponsors, donors and guests to attend annually in Lincoln.

The convention is held at Pinnacle Bank Arena, hotels in Lincoln and University of Nebraska.

FFA members have the opportunity to attend leadership workshops, participate in competitive events, listen to motivational speakers and state officer retiring addresses, watch and receive awards, attend business tours and attend the expo and career fair.

FFA Competitive Events, Degrees & Awards

Can you think of another program where students can develop essential leadership, life and career skills, earn money and be recognized on local, district, state and national levels for these efforts? FFA has it!

FFA DEGREE PROGRAM

FFA members can earn degrees as they progress through the phases of their leadership, academic and career skills development. Each degree advancement has specific requirements that must be achieved.

There are five degree levels:

- 1. Discovery Degree**
- 2. Greenhand Degree**
- 3. Chapter FFA Degree**
- 4. State FFA Degree**
- 5. American FFA Degree**



PROFICIENCY AWARDS

Agricultural proficiency awards honor FFA members who, through their SAEs, have developed specialized skills that they can apply toward their future careers. Students can compete for awards in areas covering everything from Agricultural Communications to Wildlife Management. For more information on these degrees, a full listing of Proficiency Award categories and Career Development Events, visit neagad.org.

CAREER DEVELOPMENT EVENTS

Nebraska Career Development Events (CDEs) help students develop abilities to think critically, communicate clearly and develop skills for a competitive job market. Some of the CDEs state-winning individuals and teams will move onto National Convention.



FFA Competitive Events, Degrees & Awards



LEADERSHIP DEVELOPMENT EVENTS

Nebraska Leadership Development Events (LDEs) provide FFA members with experience in the practice of influencing others through speaking and parliamentary procedure competitions. For some LDEs, the state-winning individual or team will represent Nebraska at National FFA Convention.



STATE AND AMERICAN STAR PROGRAM

The State and American Star awards represent the best of the best among thousands of State and American FFA Degree recipients. Finalists for the award have mastered skills in production, finance, management and/or research. State and American Star award areas include: Star in Production, Star in Agribusiness, Star in Agricultural Placement and Star in Agriscience.

FFA Program of Activities

All well-run organizations have a plan for activities. FFA chapters develop a Program of Activities (POA) as a way to set goals for the chapter and outline the steps needed to meet those goals.

A well-planned POA will ensure chapter activities meet the needs of its members, provide direction from year to year, lead to a workable budget, provide experience in planning and serve as a reference point throughout the year. A POA also helps chapters communicate their goals with administrators, parents, advisory committees and their community.

By engaging in the development and delivery of a quality POA, students develop leadership and planning skills which are essential in all careers.

Chapters can earn national recognition for their POA. Each year, there are 10 chapters identified as a National FFA Premier Chapter in each of the three focus areas.

In addition, another ten high school chapters will also be chosen as National FFA Models of Excellence award winners. These chapters exhibit excellence in all three categories of the Program of Activities. This award program recognizes chapters who successfully complete an annual Program of Activities designed to encourage members to work as part of a team, to serve others and to grow as individuals.



THE CHAPTER POA HAS THREE FOCUS AREAS:

Building Communities

Strengthening Agriculture

Growing Leaders



BECK'S

Proud to Support Nebraska FFA!

Proud to
Support



BNSF
RAILWAY

REIMAGINE LINCOLN



KNOWLEDGE IS POWER IN LINCOLN, NEBRASKA

The future belongs to those who
believe in the beauty of their dreams.



LINCOLN.ORG/FFA23



Proud to Support



Nebraska's leading insurer of
farms and ranches.



farmers mutual
of nebraska

Always alongside you.

auto | farm | home | fmne.com

AGP is Proud to Support the Nebraska FFA



AGP[®]

Ag Processing Inc

www.agp.com



**Dultmeier Proudly
Supports Nebraska
Agriculture & FFA**

Since 1934



The future
of agriculture
is in good,
calloused hands.

 **BASF**

We create chemistry

BASF is a proud
supporter of the
Nebraska FFA.

© 2019 BASF Corporation. All rights reserved. APN 19-CB-0017

**EXTREME
AG, INC**

Nebraska FFA – Going Strong
Brad Farr, Cambridge 308-440-2652



Proud to Support Nebraska FFA

Helena Agri-Enterprises, LLC
PROUDLY SUPPORTS
Nebraska FFA

Supporting our Customers
Supporting our Community



HELENA® *People... Products... Knowledge...*
helenaagri.com

The image is a vertical banner. At the top, text reads "Helena Agri-Enterprises, LLC PROUDLY SUPPORTS Nebraska FFA". Below this, "Supporting our Customers" and "Supporting our Community" are written. The center features a photograph of a man in a white hat and blue shirt examining a corn plant in a field, with other people partially visible. At the bottom is the Helena logo and tagline "People... Products... Knowledge..." along with the website "helenaagri.com".

HEARTLAND

BUILDERS CO.

SUPERIOR QUALITY IN EVERY BARN

Ready for a new livestock barn? Heartland Builders is the contractor you need! We listen to your needs, help you envision the complete project, and walk with you each step of the process.

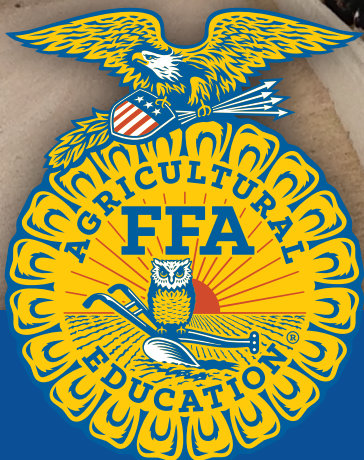
www.heartlandbuilders.net



Proud to Support



MIDWEST PMS LLC
(800) 635-3031



Proud to Support



Nationwide®

Proud to support the FFA and the next generation of agriculture leaders

#1 farm insurer in the U.S.*

NationwideAgribusiness.com

*A.M. Best Market Share Report 2020. Nationwide, the Nationwide N and Eagle, and Nationwide is on your side are service marks of Nationwide Mutual Insurance Company.
© 2022 Nationwide GCO-0563AO.1 (02/22)



Proud to
Support



Proud to
support
the
Nebraska
FFA



ASA

Agri-Services Agency
Leaders in Agricultural Insurance

Service beyond insurance...

We're in the business of partnering with farmers. Together, we make your operation the best it can be, and protect you from the risks you face.

Call today at 1.877.466.9089
or visit agri-servicesagency.com

Countryside Bank is Proud to Support Nebraska FFA!



Proud to support Nebraska FFA!



nebraskacorn.gov

Are you a candidate for the AKRS Jump Start Scholarship?

Tuition & Fee Reimbursement • Jump Start & Tool Bonus



AKRS.com



Scan for more
information

FUELING THE FUTURE

We're proud to sponsor the FFA and help fuel the ag industry with reliable, energy-saving natural gas.



**Farmers
National
Company**TM

Proud to
Support





**Serving the Cattle
Industry Since 1988.**

(308) 894 - 5005



LIQUID SUPPLEMENTS - DISTILLER GRAIN SALES - NUTRITION SERVICES



**WE'RE PROUD TO TURN OUR BAG
BLUE AND GOLD.**

BREVANT.
seeds

Proud Supporter of Nebraska FFA



®.™ Trademarks of Corteva Agriscience and its affiliated companies. ©2022 Corteva

NBA Nebraska Bankers Association





PIONEER.

We're investing in the future

Pioneer is proud
to support education
programs that
help ensure the
successful agriculture
of tomorrow.



Photo courtesy of the National FFA Organization. TM & SM Trademarks and service marks of Dow AgroSciences, DuPont or Pioneer, and their affiliated companies or their respective owners. © 2020 PHIL. 20D-1079

Proud to
Support



MERCK
Animal Health



www.ChristensenFarms.com

OUR NOBLE PURPOSE.





PROUD TO SUPPORT THE FUTURE OF AGRICULTURE



Reinke

**BIOFUELS LIKE ETHANOL
ARE TODAY AND
TOMMORROW'S FUEL**

A LOW CARBON SOLUTION - FROM FARM TO FUEL



E15 is approved
for vehicles 2001
and newer.
Find your fuel at
fuelbynebraska.com



- ✓ Farmers and ethanol producers protect the earth and do more with less by using sustainable practices and advanced technology.
- ✓ Nebraska corn farmers are very efficient. They annually produce over 18 bushels of high-quality corn and we are the third-largest corn producer in the U.S. Only field corn is used in ethanol production.
- ✓ Ethanol producers make an impressive 3 gallons of ethanol, 16 lbs. of livestock feed (DDGs), and 3/4 of a lb. of distillers oil per bushel!
- ✓ The cattle sector provides high-quality, corn-fed beef to hungry consumers locally, throughout the country, and around the world. Cows love DDGs!
- ✓ Ethanol is the only low-carbon fuel on the market. Carbon released during ethanol production is scrubbed and sequestered to reduce GHG pollutants.
- ✓ Fuel retailers provide choices, making higher blends of ethanol available so consumers can help the environment, support farmers, and save money.



PROUD TO SUPPORT

Tomorrow's Ag Leaders



EBM[®]
CONSTRUCTION INC.

Norfolk, NE 68701
800.356.9782
ebmconstruction.net

Gavilon is a proud sponsor of Nebraska's FFA.

Nebraska farms are a critical piece to meeting the demand for feed, food and fuel across the world, so we thank you for all your hard work and dedication to farming!

GAVILON



Proud to Support

TREDZ CENTRAL

YourNextTire.com

888-513-8473

**Our
Staff
Member
Blake
Has an
American
FFA
Degree**



Nebraska Harvest Center

Kearney Ogallala Richland Seward Wayne
Nebharv.com



CLAAS



Hi Gain Feedlot

The Cattlemen's Cattle Feeder
Locations in Cozad and Farnam, Nebraska
Jeff Rudolph, Manager 308-221-4031

Proud to Support Nebraska FFA



KanEquip
Inc.™

Proud to Support
Nebraska FFA!

The Future of Agriculture is Bright.

Wholestone Farms is proud to support the FFA program, and believes in our future leaders of agriculture.



PEOPLE FOCUSED • PORK PROUD



WHOLESTONE
FARMS

Get to know us!



Bringing the consumer closer to the farmer.



**Niewohner
Feedlots**

Allison: (402) 395-6753
Egline: (402) 843-5671
Spalding: (308) 497-2178



*Caring for animals and land is a
family tradition handed down from
generation to generation.*

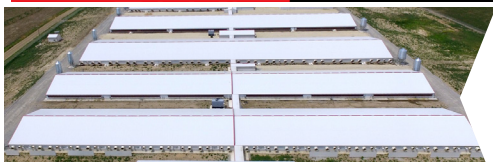
*We are proud to be
three generations strong.*

Proud Supporter of Nebraska FFA!



1501 K Street, Suite 106
Fairbury, NE 68352
402-729-3200
www.LivingstonEnt.com

**"We Strive for
Excellence in
Swine Production"**



MIDWEST
LIVESTOCK

PROUD SUPPORTER OF NEBRASKA FFA

Professionally Designed. Professionally Built.

WWW.MIDWESTLIVESTOCK.COM



SUMMIT CARBON
SOLUTIONS

Driving the Future of Agriculture in Nebraska and the Midwest



To stay connected online,
scan the QR code with
your smartphone camera.

Proud Supporter
of Nebraska FFA



SummitCarbonSolutions.com



THE HOME 
AGENCY 

Insurance for all seasons of life.

Proud to Support



Proud to Support



**Agri-Services &
Engineering, Inc.**

» Delivering reliable energy is our top priority

Built by and for our members, we power what matters to you. That's the value of our cooperative family. To learn how we're delivering on our mission, visit www.tristate.coop



TRI-STATE

A Touchstone Energy® Cooperative



Proud to Support

Proud to Support



NAU Country
A QBE Insurance Company

Insuring your crops.
Ensuring your success.

© 2022 NAU Country Insurance Company. All rights reserved. NAU Country Insurance Company is an equal opportunity provider.

Proud to Support



STANDARD
NUTRITION COMPANY

We are proud to support the Nebraska FFA in their work to build for the future.

Proud to
Support



Dawson[®]
Tire & Wheel

888.604.3403

www.dawsontire.com



Proud Supporter of Nebraska FFA

Proud to
Support



United Transport, Inc.



SANDHILLS
STATE BANK

**PROUDLY
SUPPORTS FFA**



VALENTINE - BASSETT - NORTH PLATTE - HARRISON - ALLIANCE - ARTHUR - HYANNIS - WAUNETA - GRANT - OGALLALA

**The
Andersons**[®]

www.AndersonsInc.com

**COMMITTED TO
SERVING THE
COMMUNITY**



**TITAN
MACHINERY**

Power & Precision to Grow[®]

PROUD SUPPORTER OF
NEBRASKA FFA

www.titanmachinery.com





Deep roots. We didn't start learning to drive a tractor at 10 years old. Or rise to the challenge of running the family farm. But we do help power the machinery that will empower generations of farmers to come. When the energy you invest in farming meets the energy we fuel it with, sustaining a nation happens.



WILBUR-ELLIS
AGRIBUSINESS

Proud to Support



PIVOT BIO

is Proud to Support the

Future Farmers of America



Nebraska FFA

1143.2.22.22 ©2022 PIVOT BIO



Connect with us! pivotbio.com

Proud to
Support



Hertz Farm Management
is Proud to Support Nebraska FFA!

RAISED LOCAL. RAISED RIGHT. PROUD SUPPORTERS OF NEBRASKA FFA



HOEGEMEYER
THE RIGHT SEED.



Serving America's Farmers Since 1919



JOIN OUR TEAM



www.RainHail.com/s/careers

This institution is an equal opportunity provider and employer.

Proud to
Support



Midland Vet Services



**GREATER
JOMAHA**

Proud to Support



Proudly Supporting the Future of Agriculture.



Orthman Manufacturing is proud to support Nebraska FFA and educational programs that help ensure your successful future in agriculture.

Proud to Support

ORTHMAN
orthman.com

Nutrien Ag Solutions™

is proud to support Nebraska FFA

Nutrien Ag Solutions is giving back to our local communities and helping support the future of agricultural education—and we're just getting started.

Learn more about the Give Back to Your Roots grant program at FutureOfAg.com/Giveback.



Nutrien
Ag Solutions™

UBT

Union Bank
& Trust®



Your money
has **hometown**
proud people.



Union Bank & Trust
is a proud supporter
of tomorrow's ag
leaders in the FFA.

Proud to support Nebraska FFA
and tomorrow's **ag innovators**



APPLICATION FLOTATION

Goodyear® Farm Tires tires has multiple flotation options for your application needs. With multiple tread depths and tire technologies including LSW options, Goodyear Farm Tires has you covered.



LSW
Zero Microbial Bursts™



STABLE-RESISTANT
compounding backed by warranty



REDUCED SOIL COMPACTION
up to 40% lower inflation pressures



IMPROVED TRACTION
with stability that provides more power to the ground

GRAHAM

YOUR TIRE STORE MEET POOR

www.grahamtire.com

South Dakota Locations:

Sioux Falls	800-658-3057
Aberdeen	800-658-3378
Pierre	800-529-0251
Mitchell	800-529-0061
Yankton	888-665-4406

Nebraska Locations:

Norfolk	888-371-6026
Kearney	877-321-0271
Grand Island	877-542-6320
Lincoln	800-876-1124
Fremont	402-721-7777

24 hour Farm Tire Service | Large Selection of Used Tires and Wheels | Proud Sponsors of the Nebraska and South Dakota FFA



**PROUD TO SPONSOR THE NEXT
GENERATION OF DIFFERENCE MAKERS.**

START YOUR STORY: PVEQUIP.COM/CAREERS

**THANK YOU TO ALL TRUE BLUE
PARTNERS WHO HELP THE NEBRASKA
FFA FOUNDATION FULFILL ITS MISSION.**



Nebraska Agricultural Education

neaged.org

Nebraska FFA Foundation

neffafoundation.org