



CHIEF



Trusted. Tested. True.®





For more than six decades, Chief Industries has been driven by — and has built our reputation upon — taking care of our customers and recognizing the vital role they play in our success. This commitment is expressed in our mission statement:

Our mission is to provide unparalleled personal attention to meeting the needs of our customers while treating all stakeholders with dignity and respect, thereby ensuring our strength and stability.

We also understand that diversifying our company into a variety of industries gives us greater balance and strength, no matter the headwinds we face. Our divisions and subsidiaries have made their mark in such diverse industries as:

- » Grain and bulk feed storage, grain drying, grain conditioning and material handling
- » Metal building systems
- » Commercial construction and development
- » Factory-built modular residential homes
- » Custom steel fabrication
- » Chief Pivot Walker
- » Powder coating facilities
- » Commercial and industrial electrical services
- » Ethanol and high protein feed production
- » Manufactured housing retail sales
- » Shipping via common carrier

“The success of Chief Industries is largely because of the dedicated people — past and present — who built their careers at Chief, and helped Chief build lasting relationships with customers and suppliers around the world. We take incredible pride with how we treat all of our stakeholders. The experience, dedication and passion of our people here at Chief, in meeting the needs of these stakeholders, is second to none. I couldn’t be more proud of our group, with their understanding of how important it is that we live by our mission statement each and every day.”

-DJ Eihusen, CEO, Chairman of the Board, President

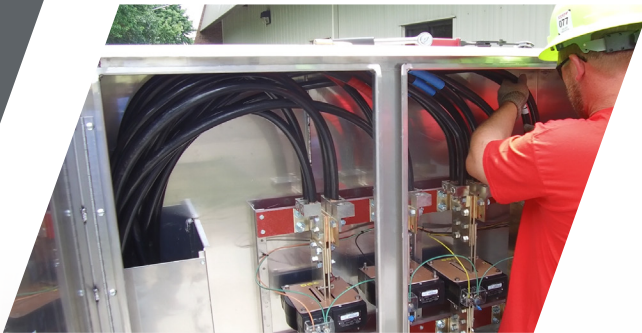
Trusted. Tested. True.®





CHIEF CONSTRUCTION

Chief Construction started as a one-man shop in 1954 and was the initial operation of Chief Industries' family of businesses. Today, Chief Construction is a design-build, construction management general contractor serving the commercial, industrial, healthcare, education, and institutional industries. With offices in Grand Island, Kearney, and Lincoln, Nebraska, they provide services across the state. The company offers complete turnkey construction services from in-house engineering and architectural design, to field operations supervision.



Heartland Electric, located in Grand Island, is a department of Chief Construction that offers complete electrical services for industrial, commercial and residential clients.

HEARTLAND ELECTRIC

CHIEF DEVELOPMENT

A department of Chief Construction, Chief Development entered the development arena through developing its own properties. As a premier real estate developer in the Midwest, it provides innovative and progressive developments through public and private partnerships. Its development portfolio includes projects for public, private and public/private institutions as well as for Chief Industries. Projects range from small properties to expansive developments.





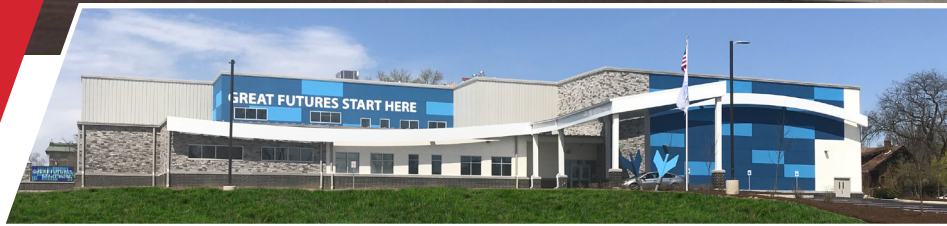
CHIEF
AGRI

Chief Agri originated in 1961 and is a leading worldwide manufacturer of commercial grain storage, grain management systems and bulk material handling systems. It has production and/or sales locations in the United States, England, France, South America, and the Philippines including three subsidiaries (Chief Industries U.K., LTD, Phenix-Rousies Industries and Westgo Chief Philippines Corporation). Chief Agri is headquartered in Kearney, Nebraska.





CHIEF 
BUILDINGS



From its origins in 1966, Chief Buildings has grown to become an industry leader in the design and manufacture of low-rise, non-residential metal building systems for such varied uses as multi-story offices, churches, and schools. It also creates metal structures for retail, agricultural, and industrial use. Chief Buildings are sold by authorized builders throughout the United States, and are manufactured in Grand Island, Nebraska, and Rensselaer, Indiana.

ARROWHEAD 
STEEL FABRICATORS

Arrowhead Steel Fabricators is a department of Chief Buildings. It specializes in the detailing and fabrication of miscellaneous steel and conventional steel structures. Arrowhead can handle simple low-rise structures, as well as more complex mid-rise construction projects.





EAGLE CREST HOMES®

Since 1996, Eagle Crest Homes in Grand Island, Nebraska has been a retailer of factory-built homes. This division of Chief is also a contractor of single-family homes manufactured by BonnaVilla.

BonnaVilla became a division of Chief Industries in 1970, and crafts high-quality modular homes from a wide variety of floor plans. Known for comfort, style, and energy-efficiency, BonnaVilla homes can be customized to suit the individual tastes of each customer. Every home is built in an indoor manufacturing facility in Aurora, Nebraska, allowing construction to continue year-round regardless of weather conditions.





A brand of Chief Industries since 1973, Chief Carriers is a dedicated fleet of trucks and trailers that primarily deliver building components for our sister divisions, Chief Agri and Chief Buildings. The use of the latest technology for tracing and tracking shipments and our outstanding safety record provide a competitive advantage for our customers. Our logistics group, Chief Logistics, has been in business since 1986 and handles flatbed shipments anywhere in the US and Canada, including specialized and oversized freight.





CHIEF FABRICATION

Opening for business in 1984, Chief Fabrication is now one of the largest custom steel fabrication operations between Chicago and Denver, serving numerous manufacturers throughout the Midwest including other Chief divisions. Stamping, welding, CNC punching, and CNC forming are among its many capabilities. Chief Fabrication also has one of the largest and most advanced powder coating facilities in the United States.



CHIEF PIVOT WALKER

Manufactured and marketed by Chief Fabrication, the Pivot Walker “walks” the pivot irrigation system through the field without creating ruts caused by conventional tires.





CHIEF

ETHANOL

Chief Ethanol operates Nebraska's first dry-mill ethanol plant. Since 1990, Chief Ethanol has produced high quality renewable fuel, distiller grains, corn oil and high-quality animal feed. Its two plants in Hastings and Lexington, Nebraska, each produce millions of gallons of ethanol per year.





FAMILY OF BRANDS

CHIEF AGRI

- » CHIEF EUROPE
 - » CHIEF ASIA
- agri.chiefind.com*

BONNAVILLA

- » EAGLE CREST HOMES
- bonnavilla.com*

CHIEF BUILDINGS

- » ARROWHEAD STEEL
- chiefbuildings.com*

CHIEF CARRIERS

- » CHIEF LOGISTICS
- chiefcarriers.com*

CHIEF CONSTRUCTION

- » HEARTLAND ELECTRIC
 - » CHIEF DEVELOPMENT
- chiefconstruction.build*

CHIEF FABRICATION

- » PIVOT WALKER
 - » POWDER COAT FACILITY
- chieffabrication.com*

CHIEF ETHANOL

chiefethanol.com

Trusted. Tested. True.®

For more information about Chief Industries, Inc., please contact us today.
3942 West Old Highway 30 • PO Box 2078 • Grand Island, NE 68802-2078
Phone: 308-389-7200 • chiefind.com



Trusted. Tested. True.®

For more information about Chief Industries, Inc., please contact us today.
3942 West Old Highway 30 • PO Box 2078 • Grand Island, NE 68802-2078
Phone: 308-389-7200 • chiefind.com