

# Nebraska Agricultural Education & FFA Career Handbook



# What is agricultural education?



*Agricultural education is a school-based program that prepares you for careers in agriculture, food and natural resources.*

*The three components of agricultural education tell our story.*



## INSTRUCTION

The lead circle and base foundation in the agricultural education system is formal classroom and laboratory instruction in over 30 available courses.

Agriculture teachers work hard to make these classes experience based and relevant to careers in the agriculture industry.



## SUPERVISED AGRICULTURAL EXPERIENCE

Agricultural education students are guided in developing a Supervised Agricultural Experience (SAE) to develop skills and gain knowledge of the agriculture industry.

Student SAEs include research projects, job shadowing experiences, jobs held or businesses started by students. All SAEs relate directly to agriculture.



## FFA

FFA is the organization for students enrolled in agricultural education and seeks to benefit students by developing their potential for premier leadership, personal growth and career success through agricultural education.

FFA allows students to compete, participate, and receive recognition in agricultural career skills development and leadership programs.



# What happens in the classroom?

*Agricultural education instruction is taught by a certified agriculture teacher who holds a degree in agricultural education from a college or university. They are dedicated to professional development and staying up-to-date on the rapidly changing global agriculture industry.*

You will learn about the Agriculture, Food and Natural Resources career pathways in your introductory course. You'll then continue on to intermediate and capstone level courses, building upon what you learned the previous year. The pathways provide a guide for you to follow what interests you most! Your agriculture teacher will also integrate FFA and Supervised Agricultural Experience concepts and principles into your classes.

## COURSE OPTIONS AND PROGRAMS OF STUDY

### Introduction to Agriculture, Food & Natural Resources

(introductory course taken by all agricultural education students)

• intermediate course      + capstone course

#### ANIMAL SYSTEMS PATHWAY

- Animal Science
- + Large Animal Management
- + Small Animal Management
- + Veterinary Science
- + Biotechnology

#### POWER, STRUCTURE & TECHNICAL SYSTEMS PATHWAY

- Power, Structure & Technical Systems Fundamentals
- Welding
- + Power, Structural & Technology Systems
- + Precision Agriculture and Engineering
- + Metals & Fabrication

#### ENVIRONMENTAL & NATURAL RESOURCES SYSTEMS PATHWAY

- Environmental & Natural Resources
- + Environmental & Natural Resources Management
- + Wildlife

#### FOOD PRODUCTS & PROCESSING SYSTEMS PATHWAY

- Food Science & Safety
- FNS Food Production, Nutrition & Health
- + Food Products and Technology
- + FNS Food Science
- + FNS Nutrition Science

#### AGRIBUSINESS SYSTEMS PATHWAY

- Agribusiness
- + Agricultural Economics
- + Agricultural Management & Entrepreneurship
- + Agricultural Sales & Communications

#### PLANT SYSTEMS PATHWAY

- Plant Science
- + Crop Management/Agronomy
- + Nursery & Landscape
- + Floriculture
- + Agriculture Biotechnology

#### DIVERSIFIED AGRICULTURE SYSTEMS PATHWAY

- Animal Science
- Plant Science
- Agribusiness
- Food Science and Safety
- Food Production, Nutrition and Health
- Environmental and Natural Resources
- Welding
- Power, Structural & Technical Foundations

# Where can your program of study lead you?

## AGRIBUSINESS SYSTEMS

Workers use technology to coordinate all activities that contribute to production, processing, marketing, distribution, financing and development of agricultural commodities.

### *Career Ideas*

Agricultural Loan Officer • Agribusiness Manager • International Ag Marketing Specialist • Marketing Communications Manager • Financial Manager



## ANIMAL SYSTEMS

Workers study genetics, nutrition, reproduction, growth and development of food and companion animals. They inspect and grade livestock food products, purchase livestock or work in sales or marketing.

### *Career Ideas*

Geneticist • Nutritionist • Physiologist • Biomaterials Engineering • Farm and Ranch Managers



## DIVERSIFIED AGRICULTURE SYSTEMS

Workers in diversified agriculture can study all programs of study to develop skills to work with plants, animals, food, environment, natural resources and power, structural and technical areas.

### *Career Ideas*

Farmer • Rancher • Sales Representative • Farm and Ranch Managers • Entrepreneur • Machinery Operator







## ENVIRONMENTAL AND NATURAL RESOURCES SYSTEMS

Workers are involved in pollution control, recycling, waste disposal and public health. They conduct hazardous waste management studies and analyze environmental research projects.

### *Career Ideas*

Environmental Engineer • Hazardous Materials Handler • Health and Safety Sanitarian • Toxicologist • Conservation Officer • Water Quality Manager • Forestry Scientist • Fisheries Scientist • Wildlife Manager



## FOOD PRODUCTS AND PROCESSING SYSTEMS

Workers discover food sources and develop ways to process, preserve, package or store food. They create new food products and inspect food processing to ensure food safety.

### *Career Ideas*

Biochemist • Food Broker or Engineer • Food Science Technician • Quality Assurance Specialist



## POWER, STRUCTURAL AND TECHNICAL SYSTEMS

Workers apply knowledge of engineering, power hydraulics, pneumatics, electronics, structures and controls to agriculture, and develop ways to improve the processing of agricultural products.

### *Career Ideas*

Agricultural Engineer • Diesel Mechanic • Welder Farm Equipment Mechanic • Global Positioning Technician



## PLANT SYSTEMS

Workers develop ways to improve the nutritional and aesthetic value of plants and quality of seeds.

### *Career Ideas*

Agronomist • Entomologist • Plant Scientist • Golf Course Superintendent • Landscape Architect

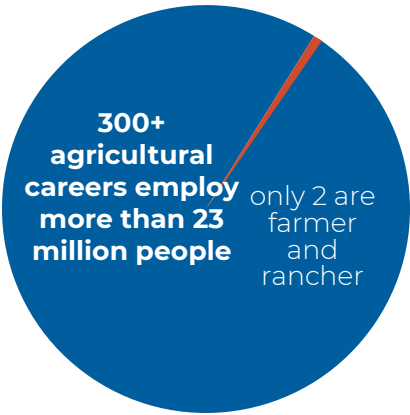
# Why are careers in agriculture so important?

Our population is growing like never before. There are 7 billion mouths to feed and our population is expected to grow to 9 billion people by 2050. Jobs and careers in all sectors of agriculture will be vital to keeping up with the global demand for agricultural and food production.

**To feed everyone, we'll need to produce as much food in the next 50 years as we have produced the last 10,000 years.**



In the U.S., one part of this challenge is finding enough workers to fill more than 20 million agricultural jobs.



**AMERICAN AGRICULTURE IS COMPOSED OF MORE THAN 300 CAREERS RELATED TO THE PRODUCTION OF FOOD. OF THESE, ONLY TWO ARE “FARMER AND RANCHER”.**

**OUT OF 57,900 AVERAGE JOB OPENINGS PER YEAR FOR AGRICULTURALLY-BASED 4-YEAR COLLEGE GRADUATES, ONLY 35,400 GRADUATES ARE EXPECTED, RESULTING IN A 39% GAP IN THE LABOR SUPPLY.**

## What do former FFA members have to say?

Jennifer Wood is the Area Manager, Nebraska for BASF. She was a member of the Fullerton FFA chapter. Her Supervised Agricultural Experience was working on her family's Christmas tree farm. One of her favorite memories was State FFA Convention. "I enjoyed both the competitions and getting to meet so many people throughout Nebraska."

Her advice to FFA members is to "take every opportunity you can to build your network through FFA. Even 25 years after having been a Nebraska FFA State Officer, I rely on the network and relationships built through FFA." She also recommends challenging yourself to try new things and she guarantees you'll learn something you'll use later in life.



Jennifer Wood



Kyle Perry

Kyle Perry, a former member of the Kimball FFA Chapter, is the Vice President of Customer Success at Farm Credit Services of America. He leads Farm Credits efforts to support the next generation of agriculture through young, beginning and small producer programs and customer-facing education initiatives.

Kyle had a diverse Supervised Agriculture Experience. He had a small herd of commercial cows, raised market steers and lambs for the county fair, grew wheat and sunflowers and worked on his family's farm.

His top memories in FFA were meeting people from all over the country who are his closest friends and colleagues today and being exposed to and learning about agriculture across the country and around the world. He says FFA taught him how to solve problems and work as a team. The best ideas come through collaboration, and in FFA, I learned how to develop relationships and build a team to take on complex challenges.

# What is a Supervised Agricultural Experience?



*A Supervised Agricultural Experience (SAE) is an experience-based program in which you gain “real world” experiences and develop skills in agriculturally related career areas that interests you.*

There are two key steps to getting started:

**STEP 1.** visit with your agriculture teacher about your career interests.

**STEP 2.** create a program that develops your skills in your areas of interest.

**SAEs are categorized as either a Foundational SAE or an Immersion SAE.**

**Foundational SAEs include instruction for all students each year related to:**

Career exploration and planning

Personal Financial planning and management

Workplace Safety

Employability skills for college and career readiness

Agricultural Literacy

**Immersion SAEs are identified in one of the following five types:**

**Entrepreneurship/Ownership:**

In this SAE, students create, own and operate a business which provides good and/or services to the marketplace. Their business can range from starting a mowing service to developing mobile apps. They make the operational and risk management decisions on how goods and/or services are provided.

**Placement/Internships:** In a Placement SAE, students work in an agriculture-related business, but do not own the business. An Internship SAE provides a more targeted experience that focuses on meeting specific training needs based on an educational training plan.

**Research (Experimental, Analytical, Invention):** Students follow the scientific process and accepted best practices for conducting research. They complete a research plan and conduct peer reviews, providing a summary presentation on their research. Research can be experimental in nature, analyzing why or how something occurs, or applying engineering design process to create a new product or service.

**School Based Enterprises:** This is an Entrepreneurship SAE that involves a group of students working cooperatively to create a business. The business is student-led and provides goods or services operated from the school campus utilizing facilities, equipment and other resources provided by the agriculture education program.

**Service Learning:** Service Learning is where a student or a team of students work toward meeting a need in the school or community. They design and carry out a project to provide a benefit to an organization, group or individuals within the community.



## FFA – What's it all about?

### THE MISSION:

The National FFA Organization is dedicated to making a positive difference in the lives of students by developing their potential for premier leadership, personal growth and career success through agricultural education.

### THE MOTTO:

Learning to Do, Doing to Learn, Earning to Live, Living to Serve.

### THE COLORS:

In 1929, at the second National FFA Convention, the delegates adopted National Blue and Corn Gold as the official colors of the FFA. This became the colors of one of the most recognizable symbols of FFA, the blue corduroy jacket.



### THE EMBLEM:

The FFA Emblem was designed and adopted in 1933 as part of the official jacket. The emblem itself carries much meaning to those involved in agricultural education.



**FFA was started in 1928 when 33 ag students gathered in Kansas City to solidify support for agricultural education. Nebraska was the sixth state to charter in 1928.**

**FFA has grown to over 760,000 members in 8,739 chapters in all 50 states, Puerto Rico, U.S. Virgin Islands and the District of Columbia.**

# Statewide FFA Leadership Opportunities

*FFA offers exciting opportunities to gain leadership and career skills while making new friends from around the state. Leadership conferences combined with competitive activities take place throughout the year.*



## **PATHWAYS TO CAREERS CONFERENCE**

Each fall, Nebraska FFA members are invited to attend a high-energy conference with industry representatives. Students get the opportunity to engage with industry professionals from the seven agriculture, food and natural resource career pathways. Industry professionals lead hands-on, interactive workshops and develop relationships with future employees.

## **CHAPTER OFFICER LEADERSHIP TRAINING (COLT)**

COLT is for FFA chapter officers to learn how to effectively serve their chapters. Conferences are held throughout May. The focus is on individual leadership skills as well as how to work as a chapter officer team. Officers engage in experience-based leadership activities, share and learn great ideas and create an action plan for their year of service.

## **FALL LEADERSHIP CONFERENCES**

Each fall, leadership conferences such as EDGE are held in various regions of the state to provide students at all levels the chance to improve their leadership skills. Participants get to know other students and begin understanding what is possible in agricultural education and FFA.

## **MISSION/IMPACT**

This conference prepares leaders to be advocates of the chapter for current and potential members, as well as community stakeholders. The two-day conference is held in Kearney in mid-February.



# FFA State Convention

**APRIL 6-8, 2022**

Nebraska FFA State Convention is an event for Nebraska's FFA members, advisors, agriculture teachers, parents, sponsors, donors and guests to attend annually in Lincoln.

The convention is held at Pinnacle Bank Arena, hotels in Lincoln's Haymarket and University of Nebraska.

FFA members during state convention have the opportunity to attend leadership workshops, participate in competitive events, listen to motivational speakers and state officer retiring addresses, watch and receive awards, attend business tours, and attend the expo and career fair.



# FFA Competitive Events, Degrees & Awards

*Can you think of another program where students can develop essential leadership, life and career skills, earn money and be recognized on local, district, state and national levels for these efforts? FFA has it!*

## FFA DEGREE PROGRAM

FFA members can earn degrees as they progress through the phases of their leadership, academic and career skills development. Each degree advancement has specific requirements that must be achieved.

There are five degree levels:

- 1. Discovery Degree**
- 2. Greenhand Degree**
- 3. Chapter FFA Degree**
- 4. State FFA Degree**
- 5. American FFA Degree**



## PROFICIENCY AWARDS

Agricultural proficiency awards honor FFA members who, through their SAEs, have developed specialized skills that they can apply toward their future careers. Students can compete for awards in areas covering everything from Agricultural Communications to Wildlife Management. For more information on these degrees, a full listing of Proficiency Award categories and Career Development Events, visit [neagad.org](http://neagad.org).

## CAREER DEVELOPMENT EVENTS

Nebraska Career Development Events (CDEs) help students develop abilities to think critically, communicate clearly and develop skills for a competitive job market. Some of the CDEs state-winning individuals and teams will move onto National Convention.



# FFA Competitive Events, Degrees & Awards

## LEADERSHIP DEVELOPMENT EVENTS

Nebraska Leadership Development Events (LDEs) provide FFA members with experience in the practice of influencing others through speaking and parliamentary procedure competitions. For some LDEs, the state-winning individual or team will represent Nebraska at National FFA Convention.



## STATE AND AMERICAN STAR PROGRAM

The State and American Star awards represent the best of the best among thousands of State and American FFA Degree recipients. Finalists for the award have mastered skills in production, finance, management and/or research. State and American Star award areas include: Star in Production, Star in Agribusiness, Star in Agricultural Placement and Star in Agriscience.



# FFA Program of Activities

***All well-run organizations have a plan for activities. FFA chapters develop a Program of Activities (POA) as a way to set goals for the chapter and outline the steps needed to meet those goals.***

A well-planned POA will ensure chapter activities meet the needs of its members, provide direction from year to year, lead to a workable budget, provide experience in planning and serve as a reference point throughout the year. A POA also helps chapters communicate their goals with administrators, parents, advisory committees and their community.

By engaging in the development and delivery of a quality POA, students develop leadership and planning skills which are essential in all careers.

Chapters can earn national recognition for their POA. Each year, there are 10 chapters identified as a National FFA Premier Chapter in each of the three focus areas.

In addition, another 10 high school chapters will also be chosen as National FFA Models of Excellence award winners. These chapters exhibit excellence in all three categories of the Program of Activities. This award program recognizes chapters who successfully complete an annual Program of Activities designed to encourage members to work as part of a team, to serve others and to grow as individuals.

## THE CHAPTER POA HAS THREE FOCUS AREAS:

### Building Communities

### Strengthening Agriculture

### Growing Leaders



## FFA Chapter Spotlight: Anselmo-Merna

The Anselmo-Merna agricultural education program received a Nebraska FFA Foundation 2020 grant to purchase lab equipment for the classroom that goes with the Curriculum for Agricultural Science Education (CASE). Lonnie Koepke, Anselmo-Merna agriculture teacher, will be receiving more certifications in the CASE courses this summer, and plans to use the CASE resources and lab equipment in six courses during the 2021-22 school year.

He has already started implementing the lab materials used with the CASE curriculum. One of the recent activities he has used was a petunia project called life, death and pH. They use the LabQuest 2 units and a pH sensor to determine the cause of deaths to test the five soil samples, analyze the data and determine their theory of what caused the death of the plant through their research, according to Koepke. When asked about how the grant has impacted the Anselmo-Merna students, he said, "They are actively involved in class activities and are now able to do more hands-on activities than in the past. The level of engagement in agriculture and the future of the ag industry has increased through their involvement in their learning."

## FFA Chapter Spotlight: Gering

This is the first year Gering had FFA at their school! As a chapter they have been able to have a few chapter meetings, install their chapter officers and prepare for their first district Leadership Development Event competition.

As a new chapter, they are utilizing the *I Believe in the Future of Ag* campaign to receive donations from local donors. They plan to use the donations to cover the costs of attending FFA competitions, FFA leadership conferences and Nebraska FFA State Convention.

Donors to the *I Believe in the Future of Ag* campaign choose which chapter they support. One hundred percent of each local donation will be sent back to the designated chapter at the end of the campaign and a portion of the \$35,000 challenge matching pool will be distributed to participating chapters.





Your money  
has **hometown**  
**proud** people.



Union Bank & Trust  
is a proud supporter  
of tomorrow's ag  
leaders in the FFA.



# Nutrien Ag Solutions™

is proud to support Nebraska FFA

Nutrien Ag Solutions is giving back to our local communities and helping support the future of agricultural education—and we're just getting started.

Learn more about the Give Back to Your Roots grant program at [FutureOfAg.com/Giveback](https://FutureOfAg.com/Giveback).

Proud to  
Support



**Nutrien**  
Ag Solutions™

© 2019 Nutrien Ag Solutions, Inc. All rights reserved.  
FFA and the FFA emblem are registered trademarks of the National FFA Organization and used with permission.  
Use of the FFA name or mark being used does not represent an endorsement by FFA of this product or service  
or an endorsement by FFA of the manufacturer or provider of this product or service.

customized insurance plans  
**created to protect  
your future.**



**farmers mutual**  
of nebraska

Always alongside you.

auto | farm | home | [fmne.com](http://fmne.com)



**Serving the Cattle  
Industry Since 1988.**

**(308) 894 - 5005**



**LIQUID SUPPLEMENTS - DISTILLER GRAIN SALES - NUTRITION SERVICES**

**AGP is Proud  
to Support the  
Nebraska FFA**

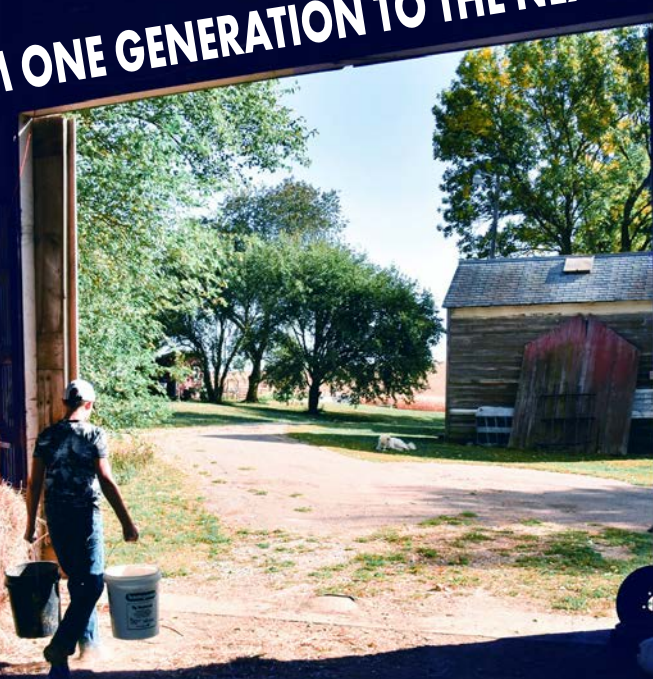
**AGP<sup>®</sup>**

**Ag Processing Inc**

**[www.agp.com](http://www.agp.com)**



FROM ONE GENERATION TO THE NEXT



# GROWING AGRICULTURE TOGETHER



Central Valley Ag is proud supporter of FFA. To learn more about CVA, visit [cvacoop.com](http://cvacoop.com).



Gavilon is a proud sponsor of Nebraska's FFA.

**GAVILON** 

Nebraska farms are a critical piece to meeting the demand for feed, food and fuel across the world, so we thank you for all your hard work and dedication to farming!



**PROUD TO  
SUPPORT**

*Tomorrow's Ag Leaders*



**EBM**

**CONSTRUCTION INC.**

Norfolk, NE 68701

800.356.9782

ebmconstruction.net



## Solutions for **Every** Field



**Proud to  
Support**



27 Locations



**AKRS.com**



**JOHN DEERE**



**AKRS  
EQUIPMENT**



The future  
of agriculture  
is in good,  
calloused hands.

**BASF**

We create chemistry

BASF is a proud  
supporter of the  
Nebraska FFA.



# DISCOVER YOUR CHAMPION

JOIN THE **U.S. ARMY** AND BECOME **LEGENDARY**

Proud to  
support  
the  
Nebraska  
FFA



## ASA

Agri-Services Agency  
*Leaders in Agricultural Insurance*

### Service beyond insurance...

We're in the business of partnering with farmers. Together, we make your operation the best it can be, and protect you from the risks you face.



Call today at 1.877.466.9089  
or visit [agri-servicesagency.com](http://agri-servicesagency.com)



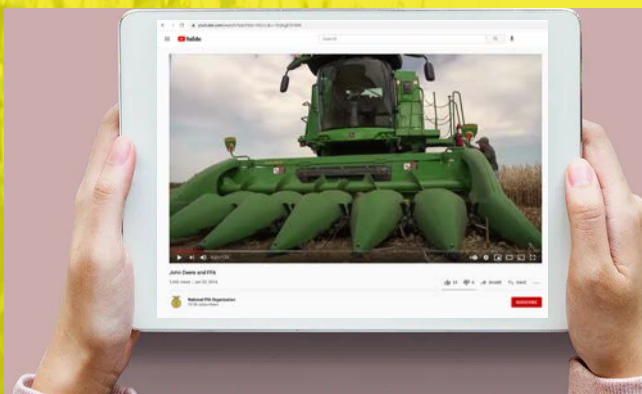


# THE FACE OF YOUTH. THE POWER OF TOMORROW.

At CHS and the CHS Foundation, we create connections to empower agriculture. That's why the CHS Foundation proudly supports high-impact ag leadership programs like FFA. Because there's nothing more rewarding than watching students connect to opportunities in the agriculture industry. We believe in the power of the future, and it all starts with igniting imagination today.

Visit **[chsfoundation.org](https://chsfoundation.org)** to learn about our ongoing commitment to the next generation of ag leaders.





# THE MORE YOU KNOW, THE MORE YOU GROW!



Bayer, Bayer Cross, DEKALB and Design® and DEKALB® are registered trademarks of Bayer Group. ©2020 Bayer Group. All Rights Reserved.





# **PROUD TO SUPPORT**

*THE FUTURE OF AGRICULTURE*



**Nationwide®**  
is on your side

**Proud to support  
the Nebraska FFA  
and the future  
ag leaders they  
are developing.**

**#1 Farm insurer in the U.S.\*  
[NationwideAgribusiness.com](http://NationwideAgribusiness.com)**

\*A.M. Best Market Share Report 2019. Nationwide, the Nationwide N and Eagle, and Nationwide is on your side are service marks of Nationwide Mutual Insurance Company. © 2021 Nationwide. GCO-0563AO (01/21 - 09/24)





# Your Family's Land Can Provide More



**Get Started Today**

**LandTrust.com**

**(406) 709-8703**

## **FFA Students**

YOU can add thousands of dollars of profit to your family's bottom line with LandTrust... this year! LandTrust is like the 'Airbnb of hunting & fishing'. By setting up and managing a LandTrust account for your family's farm or ranch you'll begin generating new conservation income from hosting hunters & fishermen on your land. Your family will thank you!

## **About LandTrust**

LandTrust partners with landowners to provide additional income by connecting them with sportsmen seeking private land for hunting and fishing. LandTrust's easy to use marketplace offers greater control, safety and money for landowners hosting sportsmen on their land.



**Proud to Support**



**MIDWEST PMS LLC**

**(800) 635-3031**



**Proud to Support**



# FFA



HelenaAgri.com

**HELENA AGRI-ENTERPRISES**  
PROUDLY SUPPORTS NEBRASKA FFA

We're proud to sponsor  
the **Nebraska FFA Foundation**  
in its pursuit of excellence.

At Liberty Mutual and Safeco Insurance, we know  
the best things in life come from striving for better  
— which is why we're proud to support the  
Nebraska FFA Foundation.



**Liberty  
Mutual.**  
INSURANCE

**Safeco**  
Insurance  
A Liberty Mutual Company



# TREDZ CENTRAL

*YourNextTire.com*

**888-513-8473**

Our  
Staff  
Member  
Blake  
Has an  
American  
FFA  
Degree



# CHIEF

A proud supporter of the next generation  
of leaders who will change the world.



*FFA makes a positive difference  
in the lives of students through  
agricultural education.*



# HEARTLAND

**BUILDERS CO.**

A SUMMIT LIVESTOCK  
FACILITIES COMPANY

## PROFESSIONALLY MANAGED CONSTRUCTION

Established in 1988, Heartland Builders is a full-service general contractor. We manage each project in person and provide tools to add value by understanding each customers' needs, always keeping your profitability in mind.

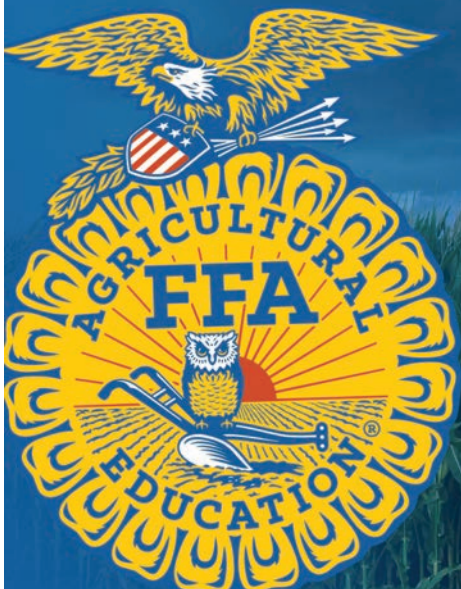
[www.heartlandbuilders.net](http://www.heartlandbuilders.net)



Proud to Support

# Nebraska Corn

Proud to support Nebraska's  
FFA students and teachers!



[nebraskacorn.org](http://nebraskacorn.org)

# EXTREME AG, INC

Nebraska FFA – Going Strong  
Brad Farr, Cambridge 308-440-2652



AXA XL is proud to support the Nebraska FFA Foundation and its work to help young people become successful adults in their communities and as agriculture producers.

**Learn more:**  
**axaxl.com** ■ **859-260-2820**

AXA and its logo are trademarks of AXA SA or its affiliates. AXA XL is a division of AXA Group providing products and services through three business groups: AXA XL Insurance, AXA XL Reinsurance and AXA XL Risk Consulting. © 2021



**Agricultural  
Services  
Inc.**

**Since  
1955**

**Service  
Is in  
Our  
Name!**

***www.asihiyield.com***



WE'RE PROUD TO TURN OUR BAG  
**BLUE AND GOLD.**

**BREVANT™**  
seeds

**Proud Supporter of Nebraska FFA**

**CORTEVA™**  
agriscience

© 2021 Corteva Agriscience and its affiliated companies. ©2021 Corteva



**WHOLESTONE  
FARMS**



*Proud Supporter of Nebraska FFA*

**PROUDLY  
SUPPORTS FFA**



**SANDHILLS  
STATE BANK**



VALENTINE - BASSETT - NORTH PLATTE - HARRISON - ALLIANCE - ARTHUR - HYANNIS - WAUNETA - GRANT - OGALLALA



## Ethanol fuel blends (like E15, E20, E85):

- ✓ Reduce cancer-causing toxins
- ✓ Cut greenhouse gases from traffic by 42%
- ✓ Support Nebraska ag & jobs
- ✓ Save you money at the pump

Find your fuel at  
[GetBiofuel.com](http://GetBiofuel.com)



## FUELING THE FUTURE

We're proud to sponsor the FFA and help fuel the ag industry with reliable, energy-saving natural gas.



**Insuring your crops.  
Ensuring your success.**



© 2021 NAU Country Insurance Company. All rights reserved. NAU Country Insurance Company is an equal opportunity provider.

**Proud to Support**



**PIONEER.**



# We're investing in the future

Pioneer is proud to support education programs that help ensure the successful agriculture of tomorrow.



Photo courtesy of the National FFA Organization. TM & SM Trademarks and service marks of Dow AgroSciences, DuPont or Pioneer, and their affiliated companies or their respective owners. © 2020 PHIL. 20D-1079



Large enough to meet your needs.  
small enough to care.

1132 9th Road, Chapman, NE 68827 • phone 308.986.2526 • fax 308.986.2626 • info@preferredpopcorn.com • preferredpopcorn.com



**STANDARD**  
NUTRITION COMPANY

*We are proud to support the  
Nebraska FFA in their work to build  
for the future.*

 **CF Industries**®

Proud to Support Nebraska FFA Foundation

**Chubb Agribusiness**

*Property and Casualty Solutions for the Agricultural Market*

[www.chubbagribusiness.com](http://www.chubbagribusiness.com)

Chubb. Insured.™



**KanEquip**  
Inc.™

Proud to Support  
Nebraska FFA!

***Serving America's Landowners Since 1929***

Contact us today for all your  
agricultural landowner needs!

**1-800-346-2650**

[Info@FarmersNational.com](mailto:Info@FarmersNational.com)



**Farmers  
National  
Company**

*Serving America's Landowners Since 1929*

**Proactive Farm Management System  
Auction and Ag Land Real Estate Services**



**[www.FarmersNational.com](http://www.FarmersNational.com)**

Real Estate Sales • Auctions • Farm and Ranch Management • Appraisal • Insurance • Consultation  
Oil and Gas Management • Forest Resource Management • National Hunting Leases • FNC Ag Stock



**MIDWEST**  
LIVESTOCK SYSTEMS

**800-742-5748**

[www.midwestlivestock.com](http://www.midwestlivestock.com)



*"Proud to support FFA members, the FFA program and the future of Agriculture"*



## Niewohner Feedlots

Albion: (402) 395-6753  
Egline: (402) 843-5671  
Spalding: (308) 497-2178



*Caring for animals and land is a  
family tradition handed down from  
generation to generation.*

*We are proud to be  
three generations strong.*



[www.ChristensenFarms.com](http://www.ChristensenFarms.com)

# OUR NOBLE PURPOSE.



**TITAN  
MACHINERY**  
Power & Precision to Grow™

PROUD SUPPORTER OF  
**NEBRASKA FFA**

[www.titanmachinery.com](http://www.titanmachinery.com)



**The  
Andersons**

[www.AndersonsInc.com](http://www.AndersonsInc.com)

**COMMITTED TO  
SERVING THE  
COMMUNITY**



**TRUCK WASHOUT  
& TRANSPORTATION**

606 E. Prospect Road  
Lexington, NE 68850  
308-324-5790

**Thinkers. Doers. Game changers.**

We're proud to support the Nebraska FFA.



Pathway Bank [www.PathwayBank.com](http://www.PathwayBank.com)



Member  
FDIC





# Hi Gain Feedlot

*The Cattlemen's Cattle Feeder*

Locations in Cozad and Farnam, Nebraska

Jeff Rudolph, Manager 308-221-4031

Proud to Support Nebraska FFA

## PROUD SUPPORTER OF NEBRASKA FFA

1501 K Street, Suite 106

Fairbury, NE 68352

402-729-3200

[www.LivingstonEnt.com](http://www.LivingstonEnt.com)



"We Strive for Excellence in Swine Production"



THE HOME  
AGENCY

Insurance for all seasons of life.

Proud to Support



Dultmeier Proudly Supports  
Nebraska Agriculture & FFA

Since  
1934

BKD is a proud supporter of Nebraska FFA.

Everyone needs a trusted advisor. Who's yours?

**BKD**  
CPAs & Advisors

402.473.7600 • [bkd.com](http://bkd.com)



Proud Supporter of Nebraska FFA



**THANK YOU TO ALL TRUE BLUE  
SPONSORS WHO HELP THE NEBRASKA  
FFA FOUNDATION FULFILL ITS MISSION.**



Nebraska Agricultural Education

[neaged.org](http://neaged.org)

Nebraska FFA Foundation

[neffaoundation.org](http://neffaoundation.org)